

MPI-134

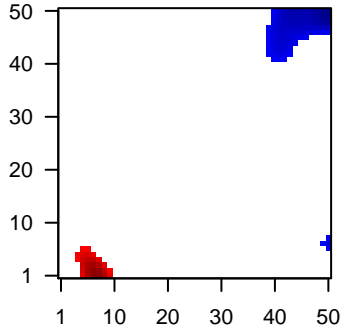
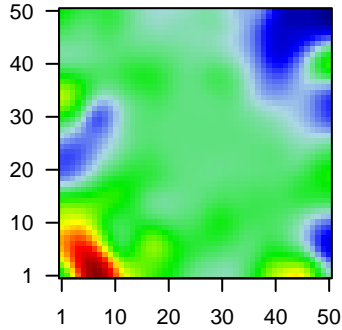
Global Summary

%DE = 0.05
 # genes with fdr < 0.2 = 587 (298 + / 289 -)
 # genes with fdr < 0.1 = 416 (207 + / 209 -)
 # genes with fdr < 0.05 = 334 (164 + / 170 -)
 # genes with fdr < 0.01 = 212 (101 + / 111 -)
 # genes in genesets = 13152

<FC> = 0
 <t-score> = -0.07
 <p-value> = 0.26
 <fdr> = 0.95

Portrait

Regulated Metagenes



Global Genelist

Rank	ID	log(FC)	fdr	p-value	Description
1	39318_at	-1.94	2e-16	3e-13	46 x 49 T cell leukemia/lymphoma 1A [Source:HGNC Symbol;Acc:HGNC:9353]
2	39729_at	-1.31	2e-16	3e-13	49 x 49 peroxiredoxin 2 [Source:HGNC Symbol;Acc:HGNC:9353]
3	201909_at	-1.75	2e-16	3e-13	43 x 49 ribosomal protein S4, Y-linked 1 [Source:HGNC Symbol;Acc:HGNC:9353]
4	202003_s_at	-1.46	2e-16	3e-13	34 x 49 acetyl-CoA acyltransferase 2 [Source:HGNC Symbol;Acc:HGNC:9353]
5	203760_s_at	-1.71	2e-16	3e-13	0 x 20 Src like adaptor [Source:HGNC Symbol;Acc:HGNC:10902]
6	204018_x_at	-1.9	2e-16	3e-13	6 x 29 hemoglobin subunit alpha 2 [Source:HGNC Symbol;Acc:HGNC:9353]
7	206255_at	-1.73	2e-16	3e-13	48 x 45 BLK proto-oncogene, Src family tyrosine kinase [Source:HGNC Symbol;Acc:HGNC:9353]
8	209116_x_at	-1.74	2e-16	3e-13	6 x 29 hemoglobin subunit beta [Source:HGNC Symbol;Acc:HGNC:9353]
9	209138_x_at	-1.73	2e-16	3e-13	41 x 42 immunoglobulin lambda constant 2 [Source:HGNC Symbol;Acc:HGNC:9353]
10	209374_s_at	-2.46	2e-16	3e-13	0 x 22 immunoglobulin heavy constant mu [Source:HGNC Symbol;Acc:HGNC:9353]
11	209995_s_at	-2.41	2e-16	3e-13	46 x 49 T cell leukemia/lymphoma 1A [Source:HGNC Symbol;Acc:HGNC:9353]
12	211699_x_at	-1.72	2e-16	3e-13	6 x 29 hemoglobin subunit alpha 2 [Source:HGNC Symbol;Acc:HGNC:9353]
13	212827_at	-1.57	2e-16	3e-13	41 x 44 immunoglobulin heavy constant mu [Source:HGNC Symbol;Acc:HGNC:9353]
14	214677_x_at	-1.51	2e-16	3e-13	41 x 42 immunoglobulin lambda constant 2 [Source:HGNC Symbol;Acc:HGNC:9353]
15	215121_x_at	-1.68	2e-16	3e-13	41 x 42 immunoglobulin lambda constant 2 [Source:HGNC Symbol;Acc:HGNC:9353]
16	215379_x_at	-1.6	2e-16	3e-13	41 x 42 immunoglobulin lambda constant 2 [Source:HGNC Symbol;Acc:HGNC:9353]
17	206310_at	2.39	9e-16	4e-11	17 x 6 serine peptidase inhibitor, Kazal type 2 [Source:HGNC Symbol;Acc:HGNC:9353]
18	217469_at	2.38	9e-16	4e-11	49 x 20 immunoglobulin heavy constant epsilon [Source:HGNC Symbol;Acc:HGNC:9353]
19	206150_at	-1.25	3e-15	5e-10	49 x 38 CD27 molecule [Source:HGNC Symbol;Acc:HGNC:11922]
20	207900_at	2.25	3e-14	5e-10	3 x 6 C-C motif chemokine ligand 17 [Source:HGNC Symbol;Acc:HGNC:9353]

Global Geneset Analysis

Rank	GSZ	p-value	#all	Geneset
<i>Overexpressed</i>				
1	15.31	NULL	214	Lymphoma T cell signature 1
2	11.06	NULL	397	GSEA C2RN_ALVEOLAR_RHABDOMYOSARCOMA_DN
3	10.51	NULL	3734	Chromatin state peripheral blood_13_ReprPC
4	10.29	NULL	327	GSEA C2RUTELLA_RESPONSE_TO_CSDF2RB_AND_IL4_UP
5	10.01	NULL	132	Colon Cancer signature -a
6	9.88	NULL	335	GSEA C2SCHUETZ_BREAST_CANCER_DUCTAL_INVASIVE_UP
7	9.71	NULL	196	HM HALLMARK_EPITHELIAL_MESENCHYMAL_TRANSITION
8	9.21	NULL	3918	Chromatin state peripheral blood_14_ReprPCWk
9	8.8	NULL	188	HM HALLMARK_HYPOXIA
10	8.77	NULL	176	GSEA C2PICCALUGA_ANGIOIMMUNOBLASTIC_LYMPHOMA_UP
11	8.72	NULL	556	Chr Chr X
12	8.61	NULL	404	GSEA C2RUTELLA_RESPONSE_TO_HGF_UP
13	8.55	NULL	78	Melanoma T cell specific genes
14	8.43	NULL	3724	Chromatin state peripheral blood_12_EnhBiv
15	8.24	NULL	1611	CC extracellular region
16	8.18	NULL	2984	Chromatin state killer cells peripheral blood_14_ReprPCWk
17	8.13	NULL	288	Colon Cancer track_CRC_TCGA_corr_J_msi-h_UP_mss_DN
18	8.09	NULL	1090	CC extracellular space
19	8.08	NULL	3001	Chromatin state peripheral blood_14_ReprPCWk
20	8.05	NULL	3210	CC plasma membrane
<i>Underexpressed</i>				
1	-9.13	NULL	5456	Chromatin state Neuronal_Progenitor
2	-9.02	NULL	5766	Chromatin state killer cells peripheral blood_4_Tx
3	-8.9	NULL	4528	Chromatin state naive cells peripheral blood_4_Tx
4	-8.73	NULL	7420	Chromatin state peripheral blood_1_TssA
5	-8.63	NULL	1161	MF RNA binding
6	-8.57	NULL	7751	Chromatin state killer cells peripheral blood_1_TssA
7	-8.56	NULL	5753	Chromatin state peripheral blood_4_Tx
8	-8.53	NULL	7833	Chromatin state peripheral blood_1_TssA
9	-8.46	NULL	7957	Chromatin state peripheral blood_2_TssAFlnk
10	-8.41	NULL	5601	Chromatin state naive cells peripheral blood_4_Tx
11	-8.32	NULL	8245	Chromatin state regulatory cells peripheral blood_2_TssAFlnk
12	-8.23	NULL	7635	Chromatin state macrophages peripheral blood_1_TssA
13	-8.21	NULL	5716	Chromatin state peripheral blood_4_Tx
14	-8.18	NULL	8370	Chromatin state killer cells peripheral blood_2_TssAFlnk
15	-8.15	NULL	7930	Chromatin state regulatory cells peripheral blood_1_TssA
16	-8.14	NULL	6099	Chromatin state T cell
17	-7.99	NULL	8406	Chromatin state peripheral blood_2_TssAFlnk
18	-7.97	NULL	8068	Chromatin state naive cells peripheral blood_1_TssA
19	-7.9	NULL	5527	Chromatin state regulatory cells peripheral blood_4_Tx
20	-7.88	NULL	8431	Chromatin state naive cells peripheral blood_2_TssAFlnk

